



# *BIOLOGY*

## *Animal Kingdom*

PHYLUM

PORIFERA





*Euspongia*



*Sycon*



*Spongilla*

PHYLUM

CNIDARIA





*Adamsia* (Sea Anemone)

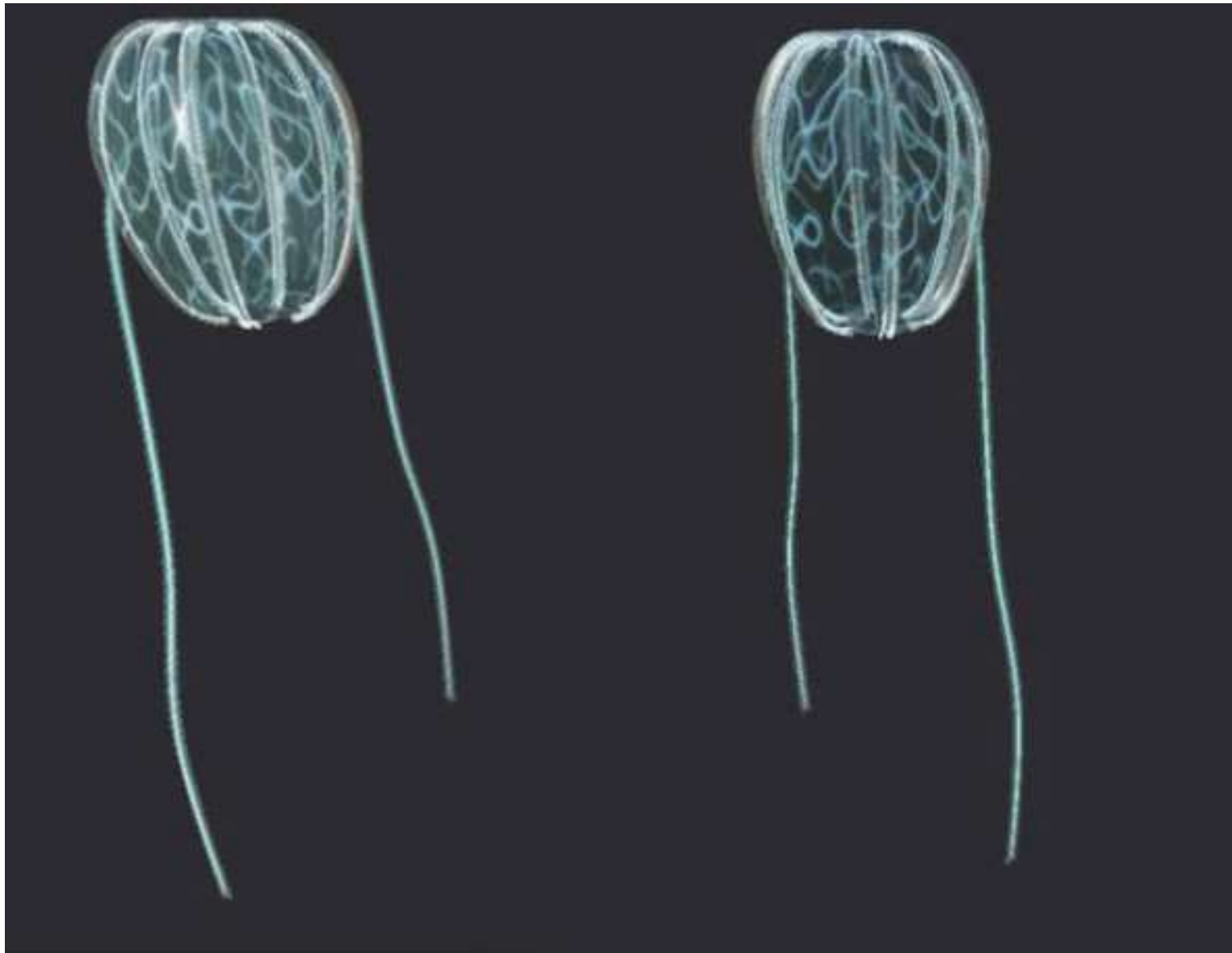


*Pysalia* (Portugese man of war)



PHYLUM  
CTENOPHORA





*Ctenoplana*



*Pleurobrachia* (Jelly Fish)

PHYLUM

PLATHYHELMINTHES





*Planaria*





*Fasciola* (Liver Fluke)

PHYLUM

**ASCHELMINTHES**





*Ascaris* (Roundworm)





*Ancylostoma* (hookworm)

PHYLUM  
ANNELIDA





*Pheritima* (Earth worm)



*Neries*



*Hirudinia* (Leech)

PHYLUM

ARTHROPODA





*Plexippus* (Butterfly)



**Prawn**





**Silver Fish**



*Aedes* (Mosquito)



*Apis* (Honey Bee)

**PHYLUM**  
**MOLLUSCA**





*Octopus* (Devil fish)



*Pila* (Snail)



*Dux* (Sea Squid)

PHYLUM

ECHINODERMATA



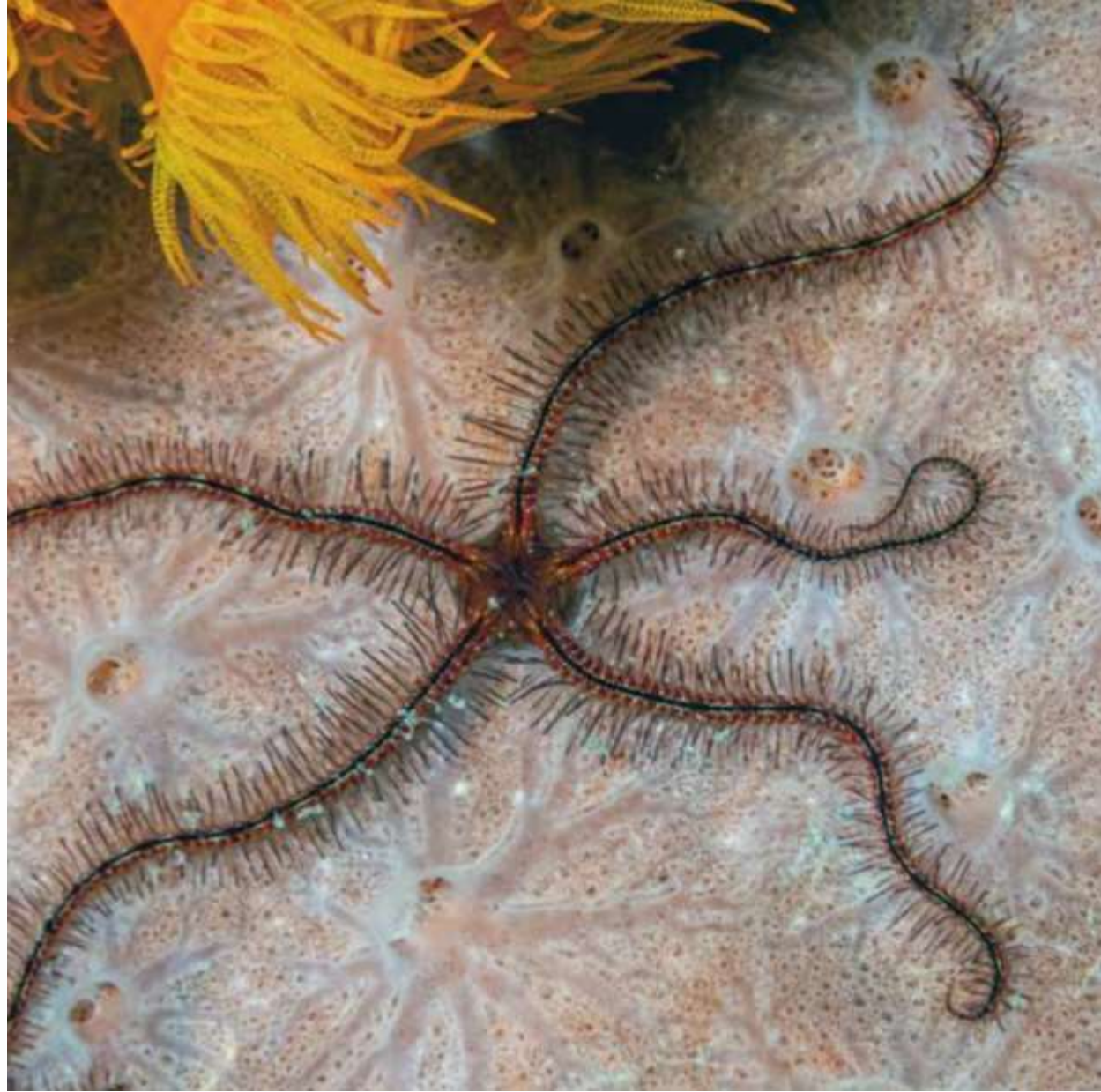




*Cucumaria* (Sea Cucumber)



*Asterias* (Star fish)



*Ophiura* (Brittle star)

PHYLUM

HEMICHORDATA





*Balanoglossus*



*Saccoglossus*

PHYLUM  
CHORDATA



SUBPHYLUM

UROCHORDATA







*Acidia*



*Salpa*

**SUBPHYLUM**  
**CEPHALOCHORDATA**





*Branchiostoma*

DIVISION

AGNATHA



CLASS

**CYCLOSTOMATA**





*Petromyzon* (Lamprey)



*Myxine* (Hagfish)



DIVISION

**GNATHOSTOMATA**



**SUPERCLASS**

**PISCES**



CLASS

**CHONDRICHTHYES**





*Trygon* (String ray)



*Pristis* (Saw fish)

# CLASS OSTEICHTHYES





*Maximus* (Basking shark)



*Squatina* (Angelshark)





*Diabolis* (Pupfish)



*Undulatus (Humphead Wrasse)*

**SUPERCLASS**

**TETRAPODA**



# CLASS AMPHIBIA





*Fallax*



**Anguinus**



*Rana tigrina*



*Salamandar*



# CLASS REPTILIA





**Rhinoceros Horned Lizard**



**Therizinosaurus**



*Naja naja* (King Cobra)

**CLASS**

**AVES**





*Gallopavo* (Wild Turkey)



*Colubris* (Humming bird)



**Kiwi**





*Strigiformes* (Owl)



*Pavo* (Peacock)

**CLASS**

**MAMMALIA**





*Ornithorhynchus* (Platypus)



Quoll



*Pan troglodytes* (Chimpanzees)



*Delphinus* (Dolphins)



*Pteropus* (Bats)





*THANK  
you*

By

M.Manojmidran & R.Sriram;

Grade: 11-Newton;

Anugragha International

School.

